

UNIT F | TYPE V2

Private Plot Area
203,02 m²

Total Living Area
152,41 m²

Uncovered Living Area
13,80 m²

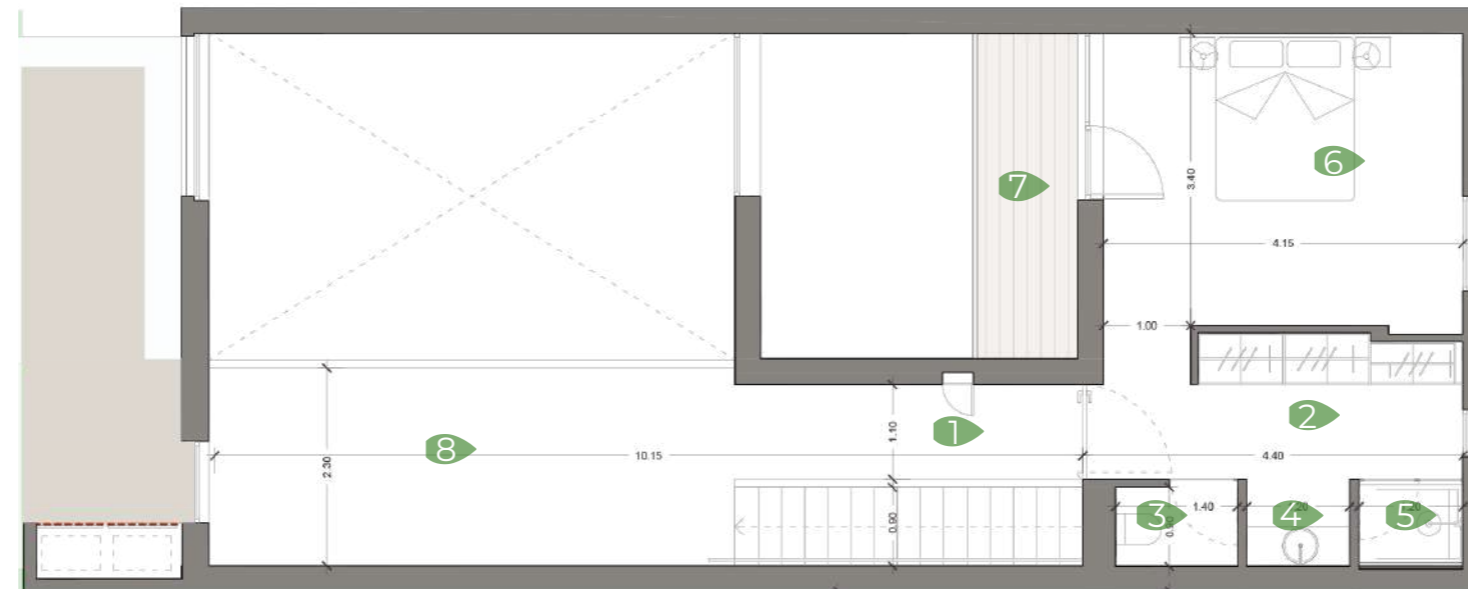
Interior Court Yard
9,36 m²

Private Garden
108,27 m²

Deck
12,82 m²



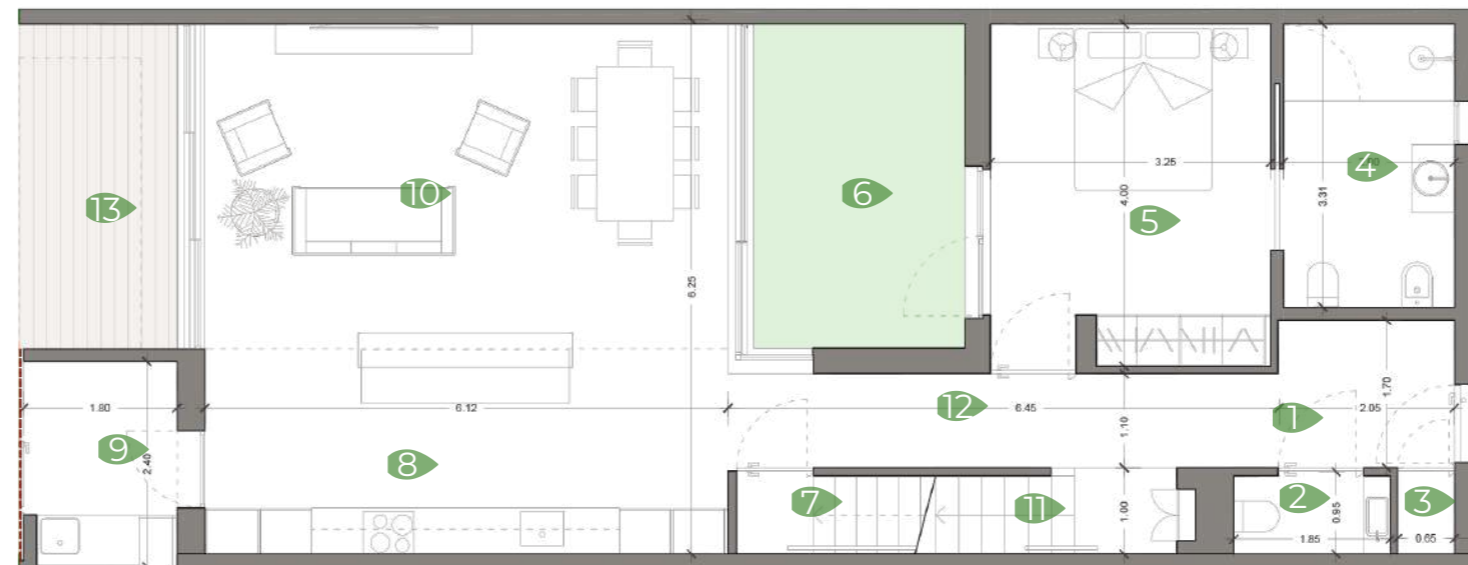
FLOOR 1



FLOOR 1

1. CIRCULATION	7,15 m ²
2. CLOSET	6,58 m ²
3. W.C.	1,37 m ²
4. W.C.	1,27 m ²
5. SHOWER	1,23 m ²
6. SUITE 2	15,03 m ²
7. BALCONY	4,43 m ²
8. MULTIPURPOSE SPACE	11,39 m ²

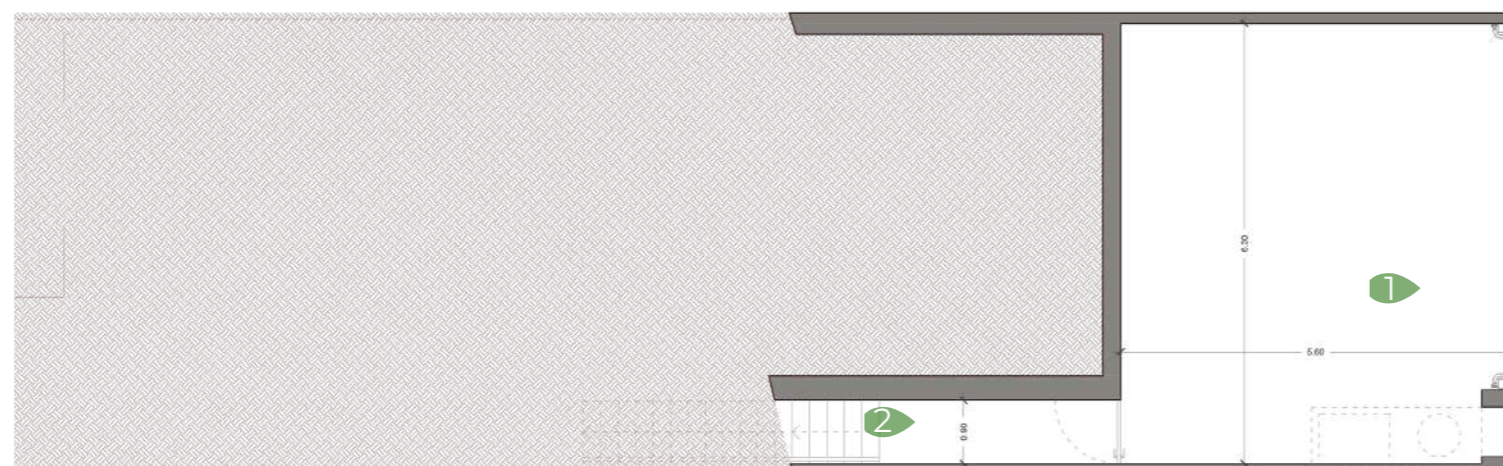
FLOOR 0



FLOOR 0

1. ENTRANCE	3,56 m ²
2. GUESTS' TOILET	1,76 m ²
3. STORAGE	0,68 m ²
4. WC (PREPARED FOR DISABLED PEOPLE)	6,63 m ²
5. SUITE 1	13,04 m ²
6. DECKING TERRACE	9,36 m ²
7. STAIRS (GARAGE)	0,82 m ²
8. KITCHEN	15,06 m ²
9. LAUNDRY	4,21 m ²
10. LIVING ROOM	23,27 m ²
11. STAIRS	4,82 m ²
12. CIRCULATION	7,08 m ²
13. DECKING TERRACE	12,82 m ²

FLOOR -1

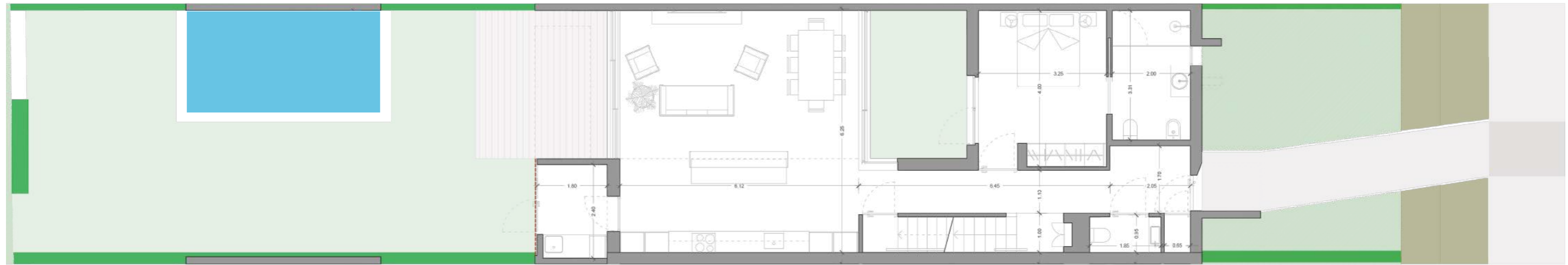


FLOOR -1

1. GARAGE	35,74 m ²
2. HALL	3,12 m ²



VILAMOURA PARQUE



*Vilamoura Park,
live in the heart
of Vilamoura*



UNIT G | TYPE V2

Private Plot Area
202,42 m²

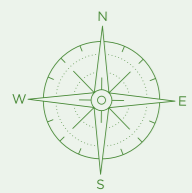
Total Living Area
152,41 m²

Uncovered Living Area
13,80 m²

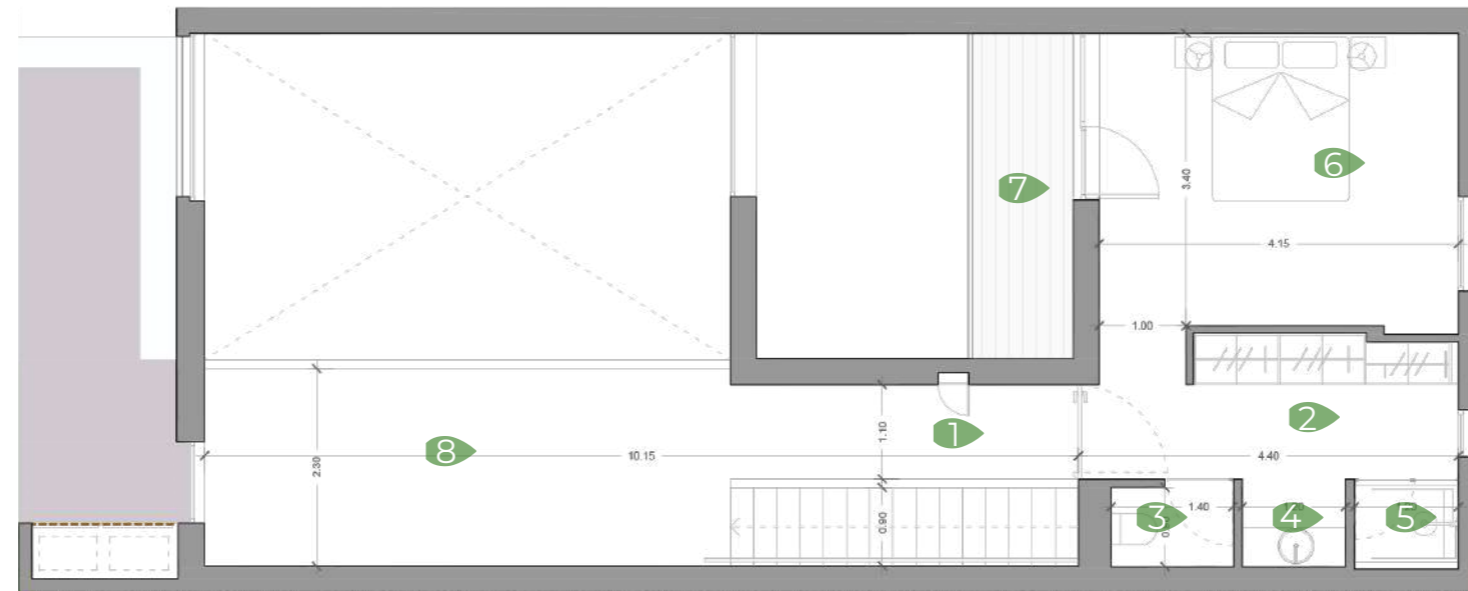
Interior Court Yard
9,36 m²

Private Garden
107,67 m²

Deck
12,82 m²



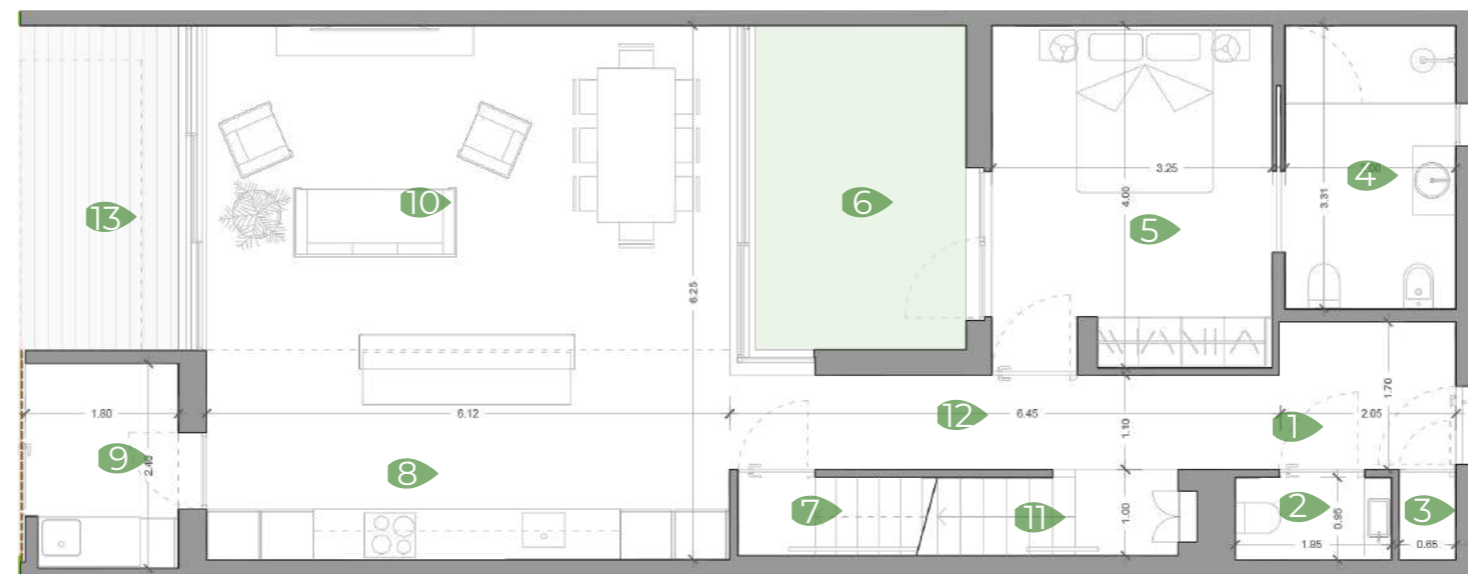
FLOOR 1



FLOOR 1

1. CIRCULATION	7,15 m ²
2. CLOSET	6,58 m ²
3. W.C.	1,37 m ²
4. W.C.	1,27 m ²
5. SHOWER	1,23 m ²
6. SUITE 2	15,03 m ²
7. BALCONY	4,43 m ²
8. MULTIPURPOSE SPACE	11,39 m ²

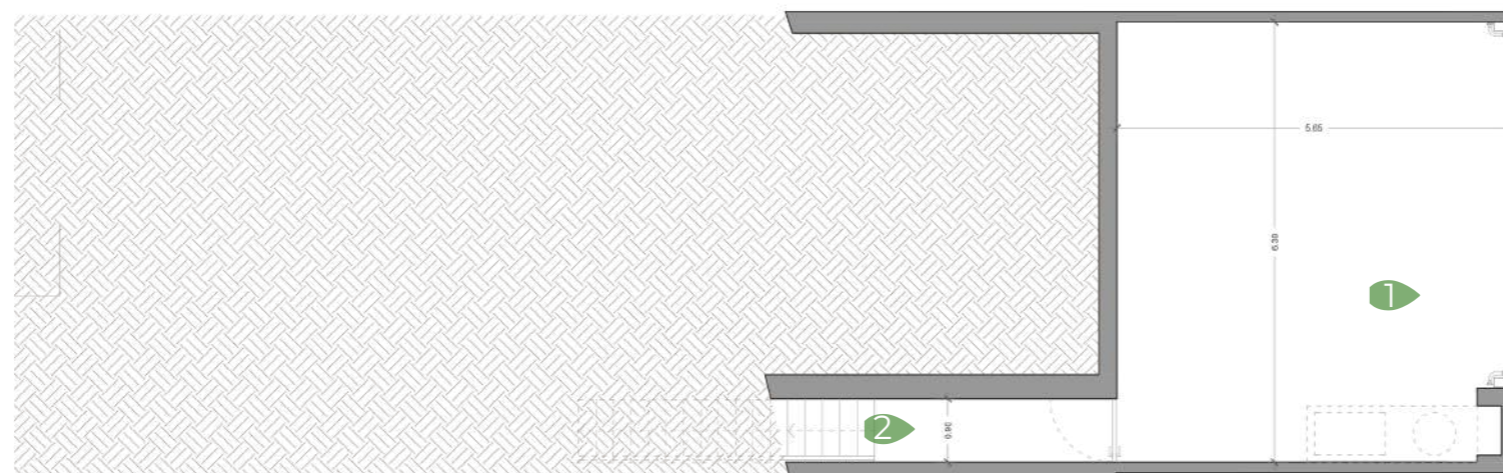
FLOOR 0



FLOOR 0

1. ENTRANCE	3,56 m ²
2. GUESTS' TOILET	1,76 m ²
3. STORAGE	0,68 m ²
4. WC (PREPARED FOR DISABLED PEOPLE)	6,63 m ²
5. SUITE 1	13,04 m ²
6. DECKING TERRACE	9,36 m ²
7. STAIRS (GARAGE)	0,82 m ²
8. KITCHEN	15,06 m ²
9. LAUNDRY	4,21 m ²
10. LIVING ROOM	23,27 m ²
11. STAIRS	4,82 m ²
12. CIRCULATION	7,08 m ²
13. DECKING TERRACE	12,82 m ²

FLOOR -1

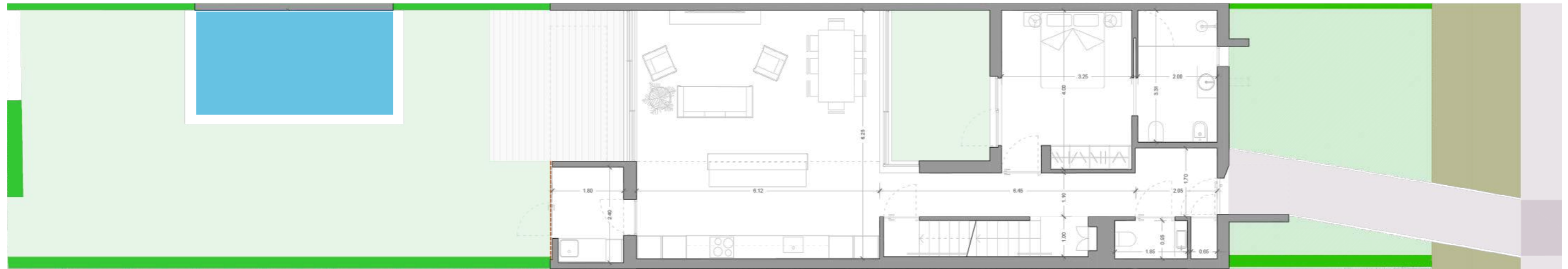


FLOOR -1

1. GARAGE	35,74 m ²
2. HALL	3,12 m ²



VILAMOURA PARQUE



*Vilamoura Park,
live in the heart
of Vilamoura*



UNIT I | TYPE V2

Private Plot Area
201,28 m²

Total Living Area
152,41 m²

Uncovered Living Area
13,80 m²

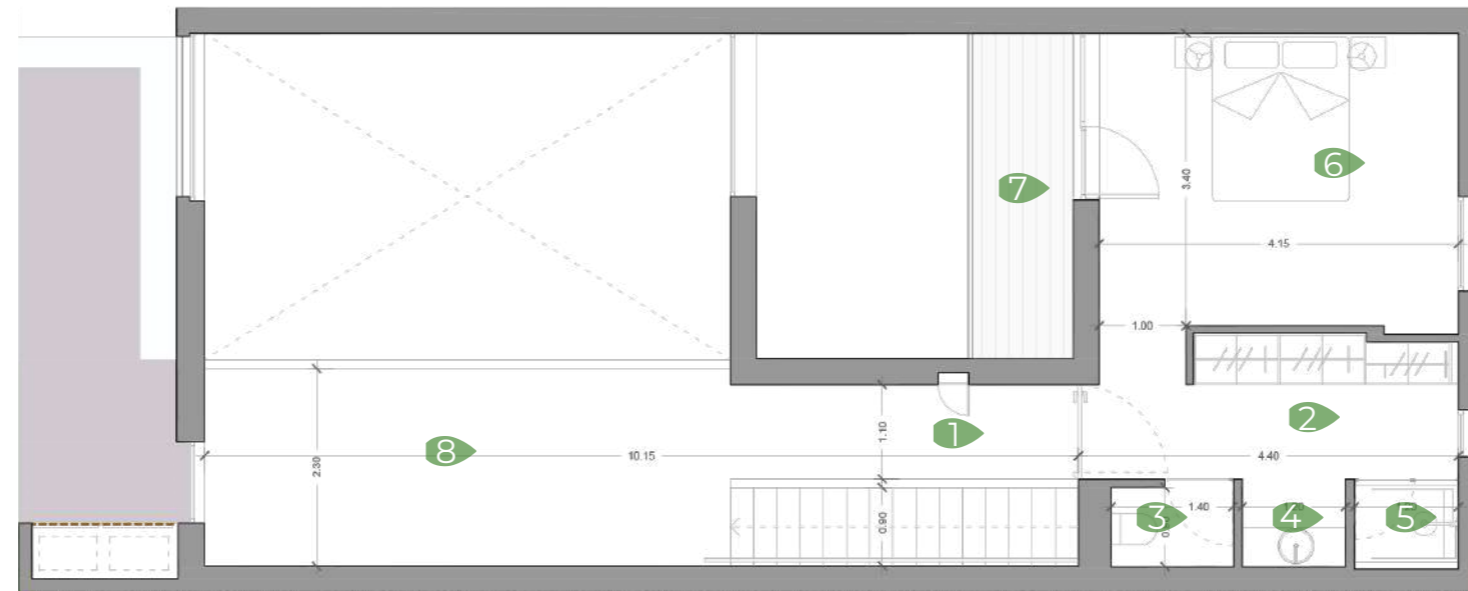
Interior Court Yard
9,36 m²

Private Garden
106,52 m²

Deck
12,82 m²



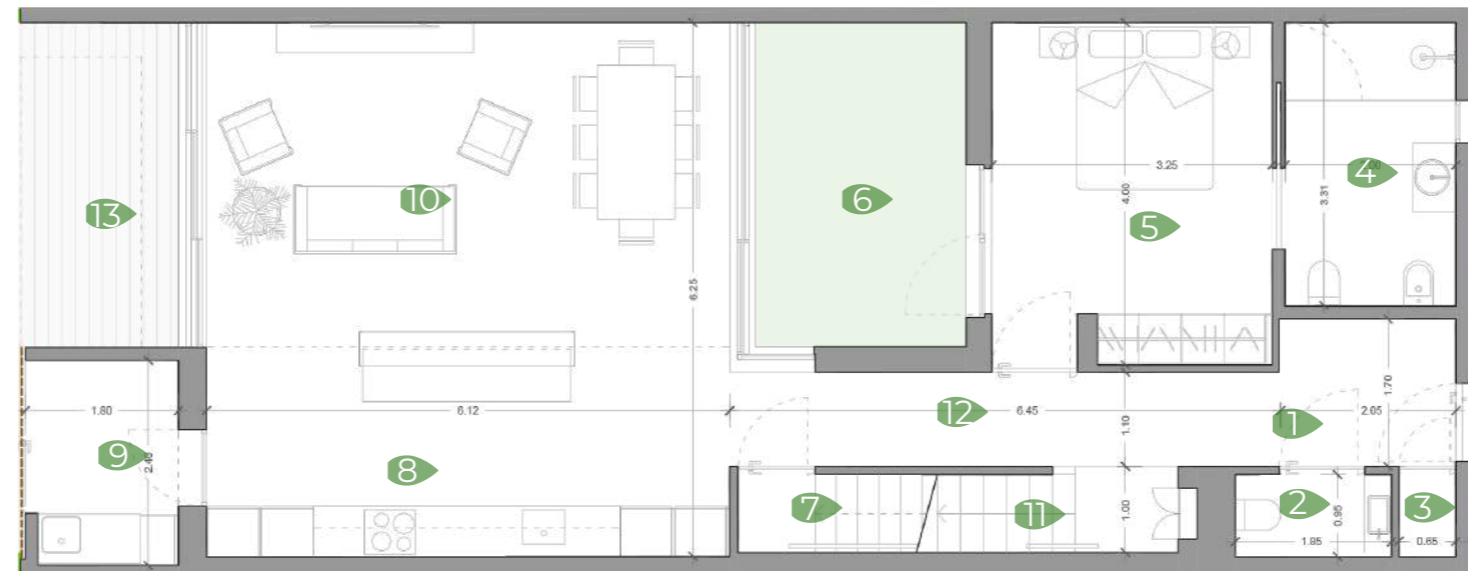
FLOOR 1



FLOOR 1

1. CIRCULATION	7,15 m ²
2. CLOSET	6,58 m ²
3. W.C.	1,37 m ²
4. W.C.	1,27 m ²
5. SHOWER	1,23 m ²
6. SUITE 2	15,03 m ²
7. BALCONY	4,43 m ²
8. MULTIPURPOSE SPACE	11,39 m ²

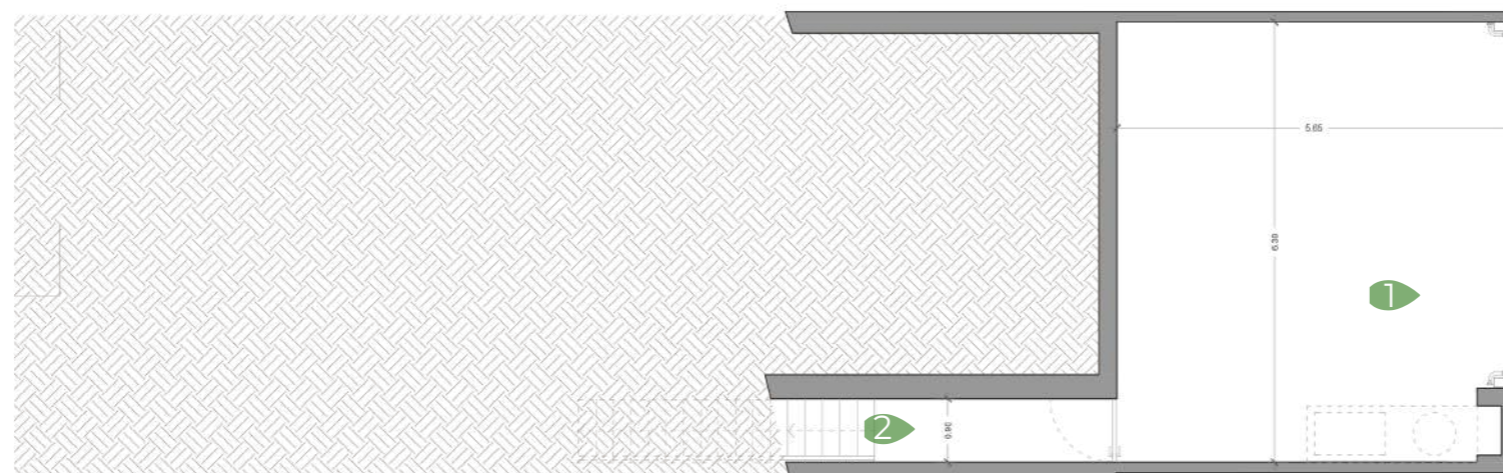
FLOOR 0



FLOOR 0

1. ENTRANCE	3,56 m ²
2. GUESTS' TOILET	1,76 m ²
3. STORAGE	0,68 m ²
4. WC (PREPARED FOR DISABLED PEOPLE)	6,63 m ²
5. SUITE 1	13,04 m ²
6. DECKING TERRACE	9,36 m ²
7. STAIRS (GARAGE)	0,82 m ²
8. KITCHEN	15,06 m ²
9. LAUNDRY	4,21 m ²
10. LIVING ROOM	23,27 m ²
11. STAIRS	4,82 m ²
12. CIRCULATION	7,08 m ²
13. DECKING TERRACE	12,82 m ²

FLOOR -1

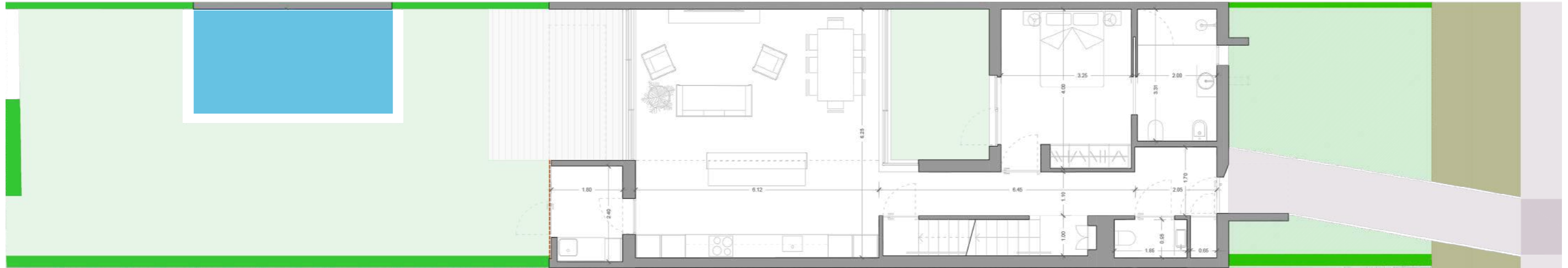


FLOOR -1

1. GARAGE	35,74 m ²
2. HALL	3,12 m ²



VILAMOURA PARQUE



*Vilamoura Park,
live in the heart
of Vilamoura*



UNIT J | TYPE V2

Private Plot Area
200,72 m²

Total Living Area
152,41 m²

Uncovered Living Area
13,80 m²

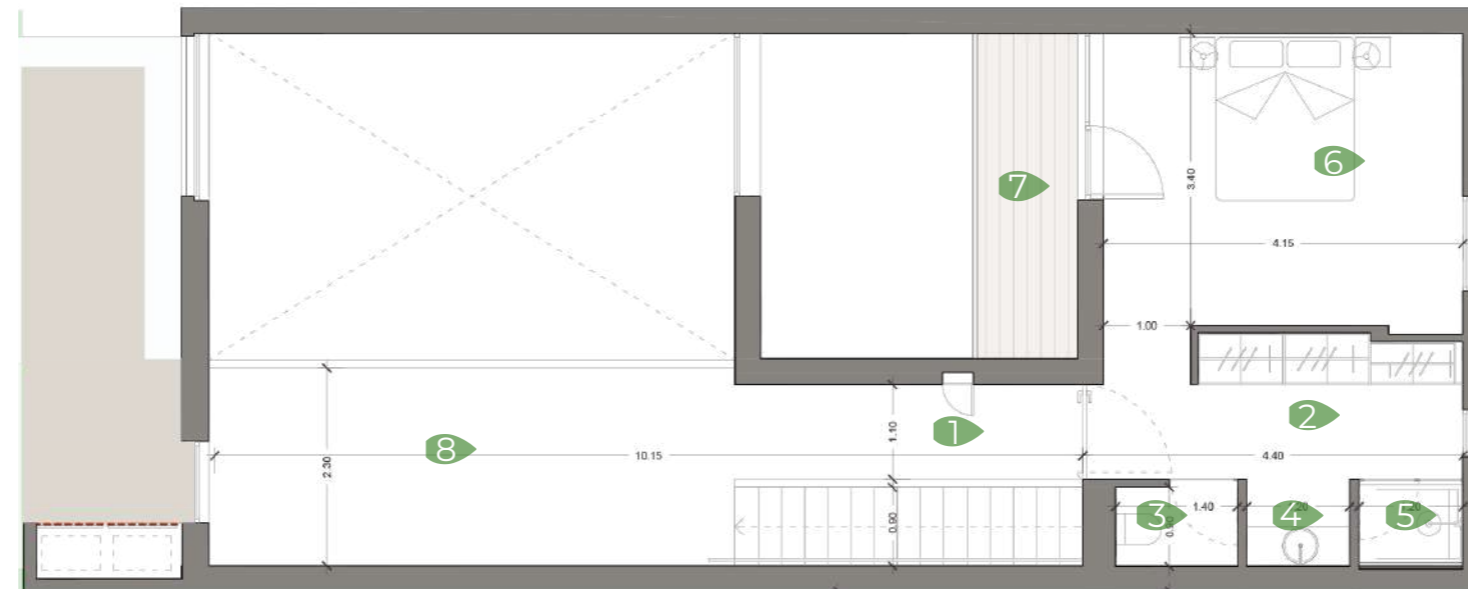
Interior Court Yard
9,36 m²

Private Garden
105,96 m²

Deck
12,82 m²



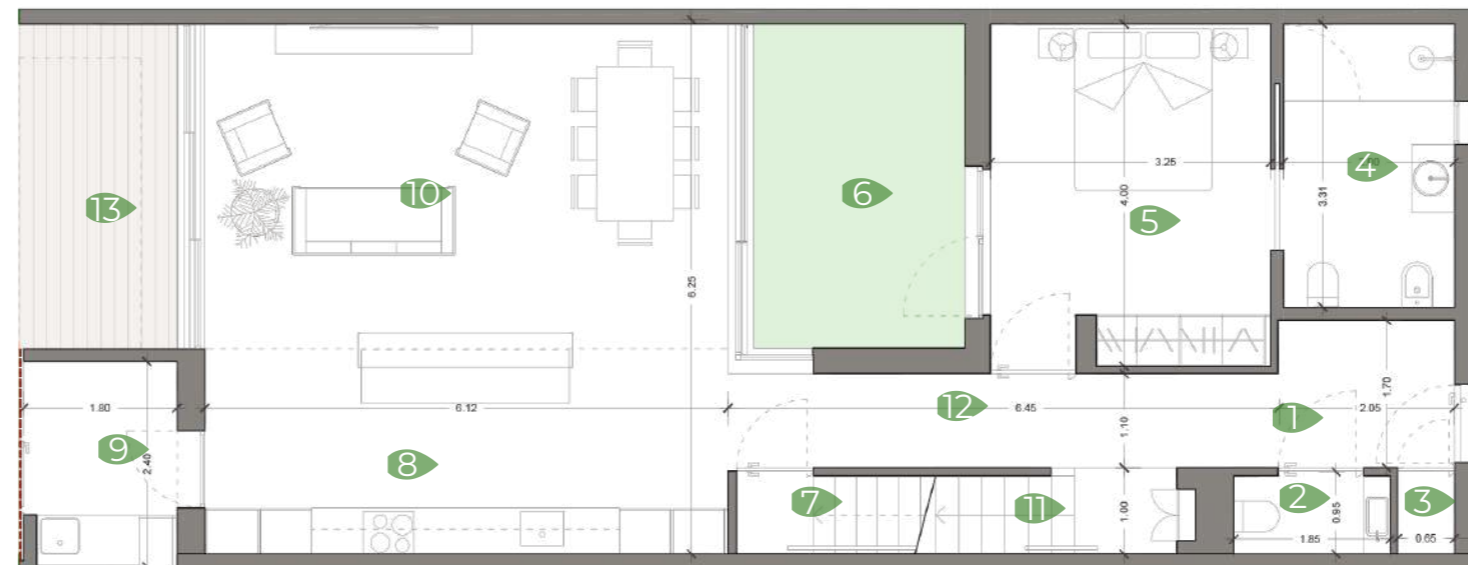
FLOOR 1



FLOOR 1

1. CIRCULATION	7,15 m ²
2. CLOSET	6,58 m ²
3. W.C.	1,37 m ²
4. W.C.	1,27 m ²
5. SHOWER	1,23 m ²
6. SUITE 2	15,03 m ²
7. BALCONY	4,43 m ²
8. MULTIPURPOSE SPACE	11,39 m ²

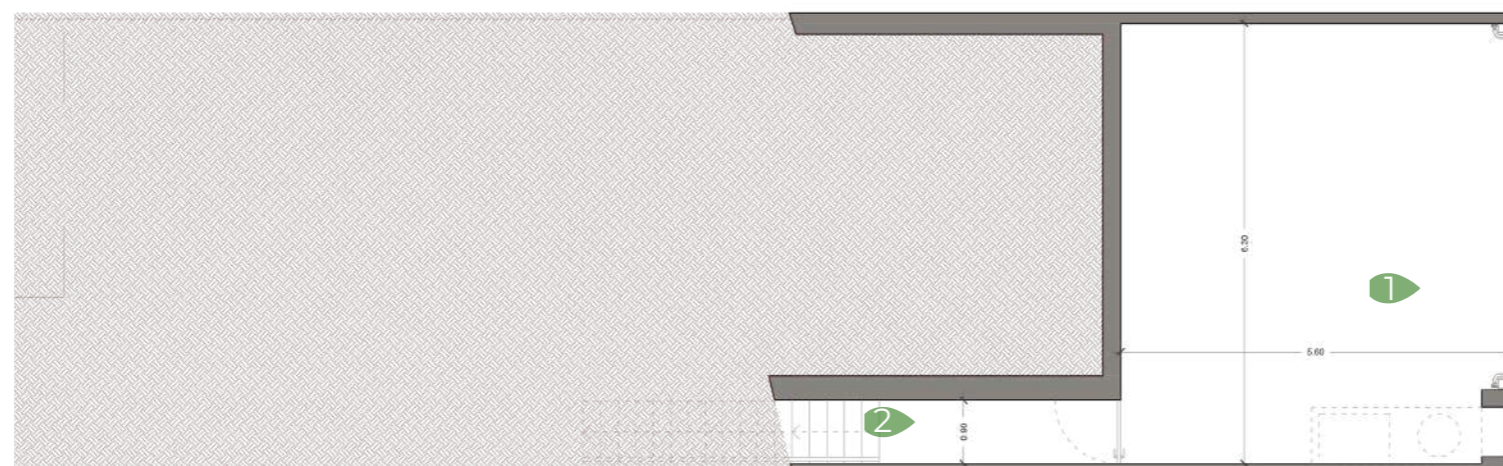
FLOOR 0



FLOOR 0

1. ENTRANCE	3,56 m ²
2. GUESTS' TOILET	1,76 m ²
3. STORAGE	0,68 m ²
4. WC (PREPARED FOR DISABLED PEOPLE)	6,63 m ²
5. SUITE 1	13,04 m ²
6. DECKING TERRACE	9,36 m ²
7. STAIRS (GARAGE)	0,82 m ²
8. KITCHEN	15,06 m ²
9. LAUNDRY	4,21 m ²
10. LIVING ROOM	23,27 m ²
11. STAIRS	4,82 m ²
12. CIRCULATION	7,08 m ²
13. DECKING TERRACE	12,82 m ²

FLOOR -1

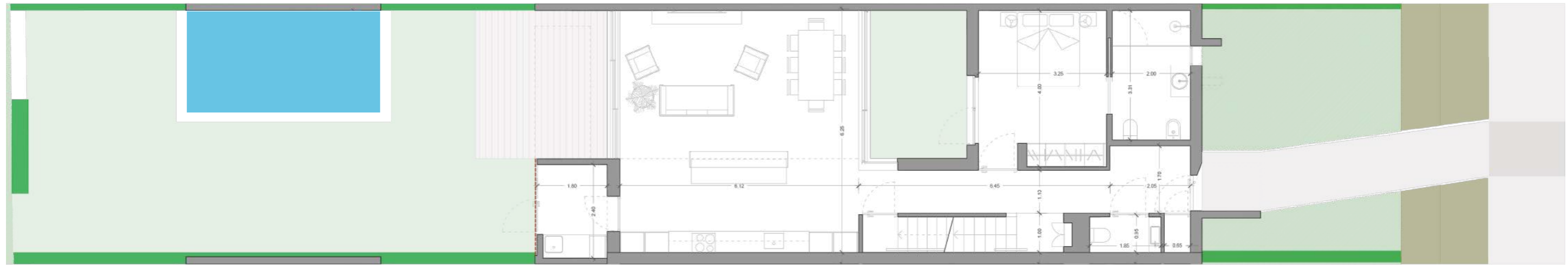


FLOOR -1

1. GARAGE	35,74 m ²
2. HALL	3,12 m ²



VILAMOURA PARQUE



*Vilamoura Park,
live in the heart
of Vilamoura*

